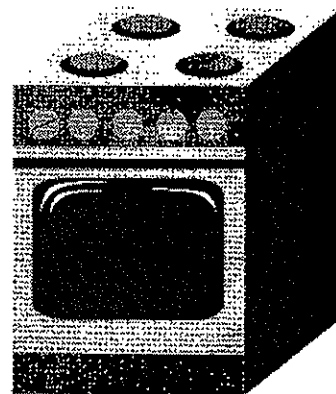
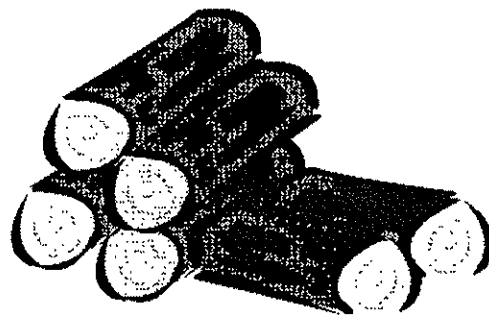
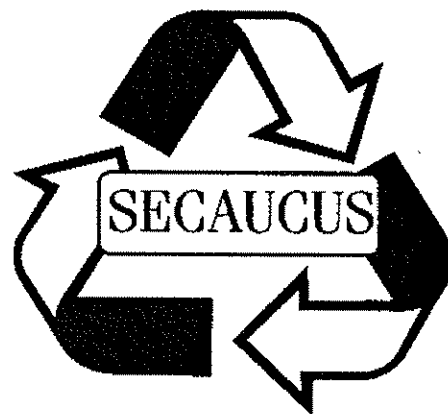
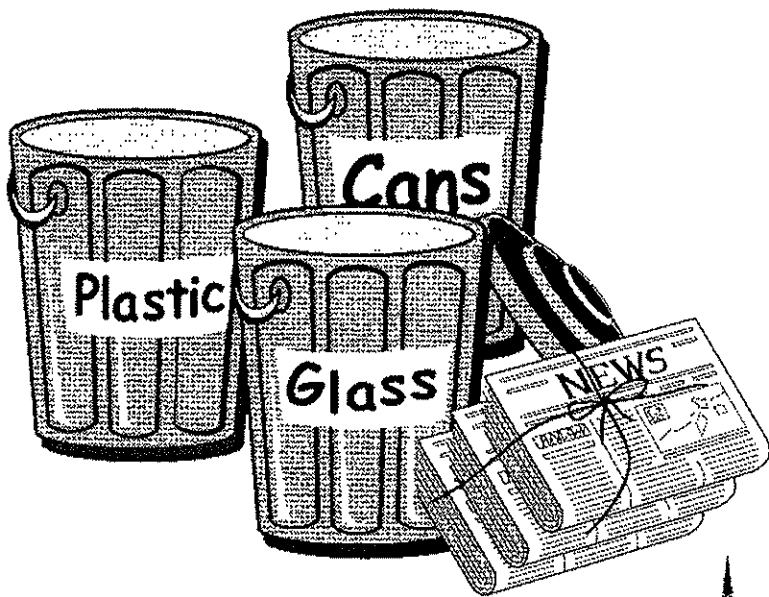


SECAUCUS RECYCLING SCHEDULE

201 319-9390 or 201 330-2080

**MANDATORY RECYCLING
IT'S THE LAW!**



SECAUCUS RECYCLING SCHEDULE

FOR MORE INFORMATION, CALL 201 319-9390 or 201 330-2080

RESIDENTIAL COLLECTION

MIXED PAPER

Mixed paper, which includes just about all types of paper, such as newspaper, magazines, junk mail, stationery, copy paper, food/cereal boxes, computer paper, phone books and cardboard are picked up every week. They should be placed in a paper bag, cardboard box or tied up (bundles should be no higher than 12 inches and tied with sting or twine only). **DO NOT** put mixed paper out in plastic bags.

COLLECTION SCHEDULE:

If your garbage is collected on Monday/Thursday, your recycling collection is Thursday.

If your garbage is collected on Tuesday/Friday, your recycling collection is Tuesday

GLASS - ALUMINUM - TIN - PLASTIC

Co-mingled means mixing aluminum beverage cans, glass bottles and jars, acceptable plastic containers and household food cans in one reusable container and putting it out at the curbside for collection in clearly marked recycling buckets. Materials that should be included are: glass food and beverage containers only (no other types of glass such as Pyrex, mirrors, window panes or light bulbs); aluminum beverage cans, household metal food cans (including pet food cans); plastic containers (such as soda bottles milk and water jugs and household laundry detergent bottles) with the recycling symbol "1" or "2" on the bottom. No plastic containers or items of any other kind (such as yogurt or margarine containers, motor oil and antifreeze bottles) should be included. **DO NOT include chemical, aerosol, oil or paint cans. DO NOT** put co-mingled recyclables out in plastic bags.

COLLECTION SCHEDULE:

If your garbage is collected on Monday/Thursday, your recycling collection is Thursday.

If your garbage is collected on Tuesday/Friday, your recycling collection is Tuesday

WHITE GOODS

White goods include refrigerators, freezers, washers, dryers, furnaces, stoves, ranges, hot water heaters, air conditioners, trash compactors and dishwashers. A pickup may be scheduled by calling the DPW at 201 330-2080.

BULK RUBBISH

Bulk rubbish includes large items such as furniture and waste from construction, remodeling, repair and demolition operations, **ONLY** when the homeowners do their own renovations (**NO CONTRACTORS**). For a fee, homeowners can rent a roll-off container. Call the DPW at 201 330-2080 to schedule a pickup of demolition debris or to rent a container.

Condominium and garden apartment dwellers should speak with their management company or superintendent for recycling locations.

SECAUCUS RECYCLING SCHEDULE

FOR MORE INFORMATION CALL 201 319-9390 or 201 330-2080

LEAVES

Leaves are collected every Wednesday from September 1 through December 31. They should be bagged and placed at curbside on Tuesday evenings.

TREE PARTS

Tree parts are collected every Wednesday. A pickup may be scheduled by calling the DPW at 201 330-2080.

CHRISTMAS TREES

Christmas trees (with all ornaments, tinsel, etc. removed) are collected from January 1 through January 31. Please place them at curbside on your regular garbage day.

Please put your materials at curbside by 6:00 AM on your collection day.

USED MOTOR OIL, SPENT OIL FILTERS AND ANTIFREEZE

Containers are available for used motor oil, spent oil filters and antifreeze at the DPW compound located at 370 Secaucus Road. Residents may recycle at this location 7 days a week from 7:00 AM to 2:30 PM.

COMPOST BINS AND RECYCLING CONTAINERS

Residents who wish to purchase a compost bin or need an additional recycling container should call the DPW at 201 330-2080.

MUNICIPAL COMPOST FACILITY

Hours of operation: Tuesday - Thursday - Saturday from 7:00 AM to 2:00 PM. Wood chips, leaf mulch and firewood are available to residents, free of charge, while available.

COMMERCIAL COLLECTION

WASTE PAPER

Commercial establishments may **NOT** dispose of waste paper products with regular garbage. The following materials are collected: junk mail, white paper, copy paper, ledger paper, envelopes, magazines, waste paper and paperback catalogs. **DO NOT** include paper cups, paper plates, napkins, carbon paper, telephone books, plastic wrap, food wrap or plastic bags.

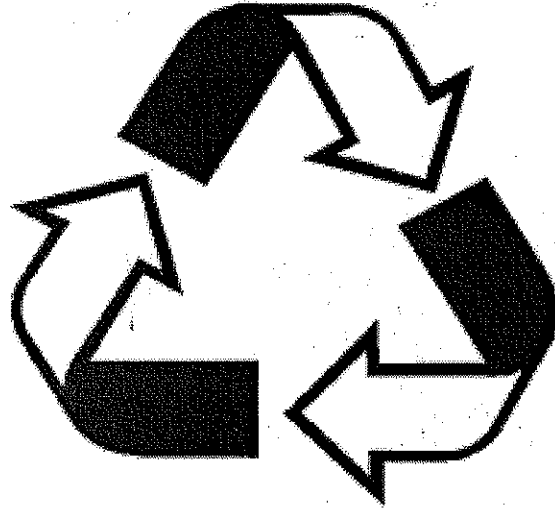
CORRUGATED CARDBOARD

Corrugated cardboard is also collected from businesses by prearrangement with the DPW. Cardboard should be flattened and tied with string in bundles approximately 3 ft. X 3ft. X 1ft., thick. **DO NOT** include plastic or wax coated boxes, food boxes or gift boxes. Please make certain that all cardboard is free of food waste and other debris before placing at the curb.

Waste paper and corrugated cardboard are collected from businesses every **WEDNESDAY**. Pickup must be scheduled in advance with the DPW. Call 201 330-2080.

S E C A U C U S
R E C Y C L I N G N E W S

R E C Y C L E



**Give Your Trash
a Second Chance**

Mayor Michael Gonnelli

Deputy Mayor John Bueckner
Councilman James Clancy
Councilman William McKeever

Councilman Gary Jeffas
Councilman Robert Constantino
Councilman John Shinnick

Town Administrator
David B. Drumeler